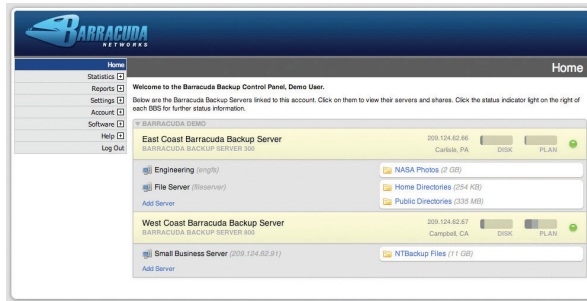


Barracuda Backup Service

Integrates local and secure offsite backup for disaster recovery.

The Barracuda Backup Service is an affordable, integrated local and offsite data backup and disaster recovery solution. Combining local and offsite storage provides the best of both worlds – fast restore times using an appliance for onsite backup and assurance of disaster recovery from the data copied to two secure, offsite storage locations via the monthly subscription. To accommodate varying degrees of importance, it is easy to select only the most critical data to be stored offsite for added protection against disasters.



The Barracuda Backup Service Web Control Panel displays backup data usage and allows quick restoration of files.

Powerful, Complete Solution

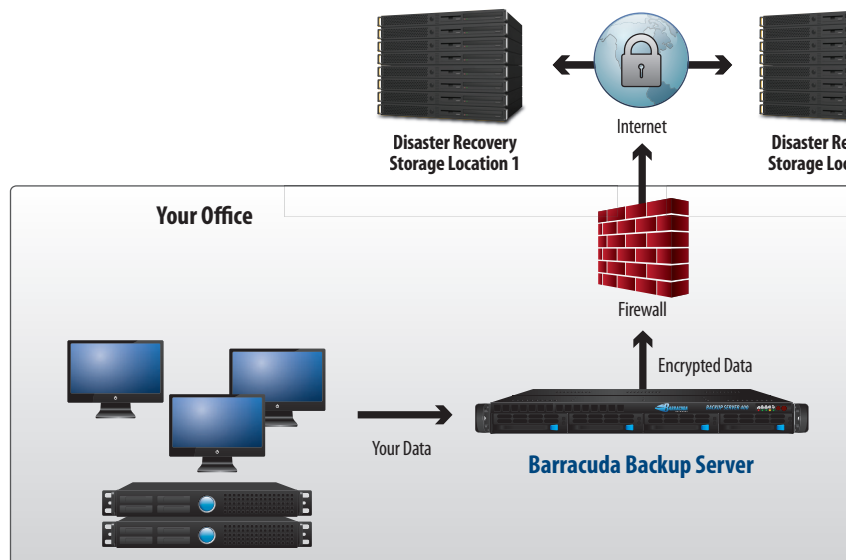
Designed for organizations of any size, the Barracuda Backup Server creates a local copy of data and efficiently transfers the data offsite without placing additional burden on production servers. Offsite storage is monitored and managed by Barracuda Central as part of the monthly Barracuda Backup Subscription. The Barracuda Backup Service includes technical support and emergency assistance with restores in the event of a system failure or disaster.

Deployed in varied and complex IT environments, the Barracuda Backup Service protects mission-critical business information. The Barracuda Backup Service utilizes industry standard protocols to access data directly from network file shares without the need of software agents. The Barracuda Backup Service can also directly connect to Microsoft Exchange and Novell GroupWise to provide email backups for more granular restoration of user mailbox folders and email messages. For complete backup of applications, such as Microsoft Exchange and Microsoft SQL Server, the Barracuda Backup Service includes and integrates with Yosemite Backup, the popular backup software protecting the data of millions of users worldwide. In addition, Yosemite Backup supports both the backup and restore of Microsoft Windows system state including the Windows registry, plus "Bare Metal" restores when used with locally attached removable media storage.

Ease of Use and Maintenance

The Barracuda Backup Service Web Control Panel makes it easy to manage and back up data to multiple units at one or more locations. The Web Control Panel provides access and control of settings, reports, restores, statistics and account information in order to manage diverse Barracuda Backup Servers and Barracuda Backup Subscription plans. In addition, customers receive automated alert notifications when conditions affecting backup service are detected.

Barracuda Backup Service Architecture



BARRACUDA BACKUP SERVICE

- MODEL
- 100
- 300
- 400
- 600
- 800



BARRACUDA BACKUP SERVICE

MODEL
100
300
400
600
800

TECHNICAL SPECIFICATIONS

Key Features

DATA BACKUP FEATURES

- Full local backup and restore
- Choose data to backup offsite
- Offsite backup to 2 locations
- Secure, cloud-based storage
- Major OS compatibility
 - Supports Windows (CIFS / SMB)
 - Supports Linux / Unix (SSHFS)
 - Supports Novell
 - Supports Mac OS X
- Message-level email backup
 - Supports Microsoft Exchange
 - Supports Novell Groupwise
- 256-bit AES encryption to offsite locations
- Centralized management
- File change detection
- Data transfer speed limits
- Data de-duplication
- Backup scheduling

YOSEMITE BACKUP SOFTWARE

- Support for:
 - Microsoft Exchange
 - Microsoft SQL Server

- Microsoft Windows system state, including Windows registry
- Bare Metal restores*

REPORTING AND STATISTICS

- Server health monitoring
- Network traffic utilization
- Storage utilization
- File revision history
- Detailed offsite backup reports
- Detailed restoration reports
- Administrator / user activity

ADMINISTRATION & POLICY MANAGEMENT

- Roles-based administration
- Centralized Web interface
- Flexible data retention
- Litigation readiness
- File watch rules
- Exclusion rules

DATA RESTORATION METHODS

- Barracuda Restore Client for Windows
- FTP from Barracuda Backup Server
- FTPS from Barracuda Central
- Barracuda Backup's Web interface

- 24x7 Barracuda Technical Support restoration assistance
- Shipment of restored data from Barracuda Networks

Hardware Features

POWER REQUIREMENTS

- AC input voltage 100-240 volts
- Frequency 50/60 Hz

CONNECTORS

- Standard VGA
- PS/2 keyboard / mouse
- Ethernet (see chart below)
- Serial port (DB-9)

Support Options

BARRACUDA BACKUP SUBSCRIPTION

- Replicates data to 2 locations
- Proactive monitoring
- Alert notifications on errors, warnings, file-based events
- Standard Technical Support

INSTANT REPLACEMENT SERVICE

- Replacement unit shipped next business day
- 24x7 technical support

* With locally attached removable media storage

SUBSCRIPTION PLANS

The Barracuda Backup Subscription plans are linked with individual Barracuda Backup Servers. The plan enables Barracuda Backup Servers to securely transfer and store backed up customer data in two offsite data centers on redundant disk-based storage hardware maintained by Barracuda Central.

Barracuda Backup Subscription plans are offered at multiple levels to meet the needs of any organization – 20GB, 50GB, 100GB, 250GB, 500GB, 1,000GB, 1,500GB, 2,000GB, 3,000GB and 5,000GB.

The storage necessary to maintain large amounts of current and historic data versions is very efficient, due to the advanced data de-duplication and compression methods in the Barracuda Backup Service. For most backup scenarios, you should choose a plan level at 1.5 times the amount of data you intend to backup as it is sized on your file servers. Choosing a plan at this level will allow you to store all of your current data and generally provide ample space for your historic data retention goals.

MODEL COMPARISON	MODEL 100	MODEL 300	MODEL 400	MODEL 600	MODEL 800
Capacity*					
Maximum Local Storage	250GB	500GB	1,250GB	2,500GB	5,000GB
HARDWARE					
Rackmount Chassis	1U Mini	1U Mini	1U	1U	2U
Dimensions (in.)	16.8 x 1.7 x 14	16.8 x 1.7 x 14	17.2 x 1.7 x 19.8	17.2 x 1.7 x 19.8	17.4 x 3.5 x 25.5
Dimensions (cm.)	42.7 x 4.3 x 35.6	42.7 x 4.3 x 35.6	43.7 x 4.3 x 50.3	43.7 x 4.3 x 50.3	44.2 x 8.9 x 64.8
Weight (lbs. /kg.)	12 / 5.4	12 / 5.4	26 / 11.8	26 / 11.8	52 / 23.6
Ethernet	1 x 10/100	1 x 10/100	1 x Gigabit	1 x Gigabit	1 x Gigabit
AC Input Current (Amps)	1.0	1.2	4.1	4.1	5.1
Redundant Disk Array (RAID)		✓	✓	✓	✓
FEATURES					
Hardened and secure OS	✓	✓	✓	✓	✓
Local Backup Cache	✓	✓	✓	✓	✓
Backup Schedules	✓	✓	✓	✓	✓
Bandwidth Rate Control	✓	✓	✓	✓	✓
Secure Offsite Transfer	✓	✓	✓	✓	✓
Local Restore	✓	✓	✓	✓	✓
Partial Offsite Selection	✓	✓	✓	✓	✓

US 10.0 Specifications subject to change without notice.

*Capacities depends on environment and selected options.

All Barracuda Backup Server models require Barracuda Backup Subscriptions.